



LAUNCHING EARLY-CAREER ACADEMIC PATHWAYS IN THE MATHEMATICAL AND PHYSICAL SCIENCES LEAPS-MPS (NSF 22 - 604)

PROGRAM CONTACTS:

CATALINA ACHIM

OFFICE OF STRATEGIC INITIATIVES

CACHIM@NSF.GOV

JAQUELINE KEANE

ASTRONOMY

JKEANE@NSF.GOV

ANNE MARIE SCHMOLTNER

CHEMISTRY

ASCHMOLT@NSF.GOV

SOULEYMANE DIALLO

MATERIALS RESEARCH

SOMARDIA@NSF.GOV

TOMEK BARTOSZYNSKI

MATHEMATICAL SCIENCES

TBARTOSZ@NSF.GOV

KATHY MCCLOUD

PHYSICS

KMCCLOUD@NSF.GOV

Frequently Asked Questions about the LEAPS Solicitation can be found [here](#).

DECEMBER 14, 2023 AND JANUARY 4, 2024



Useful Links

1) The LEAPS Program

<https://new.nsf.gov/funding/opportunities/launching-early-career-academic-pathways>

1) The NSF 22-604 Solicitation

<https://www.nsf.gov/pubs/2022/nsf22604/nsf22604.htm>

3) FAQs [https://www.nsf.gov/mps/mps_webpage_documents/LEAPS NSF 22-604 FAQ.pdf](https://www.nsf.gov/mps/mps_webpage_documents/LEAPS_NSF_22-604_FAQ.pdf)

4) The NSF Proposal and Award Policies and Procedures Guide (PAPPG)

https://nsf-gov-resources.nsf.gov/2022-10/nsf23_1.pdf?VersionId=7yfhel.bNrekBK7F5cKu9riXFbi1YjRX

Important note: *Your proposal must be compliant and provide information identified in both the NSF 22-604 Solicitation and the NSF PAPPG. If both documents have specific requirements of content or format for the same section/component of your proposal, follow the Solicitation instructions.*



THE LEAPS SOLICITATION

GOALS.

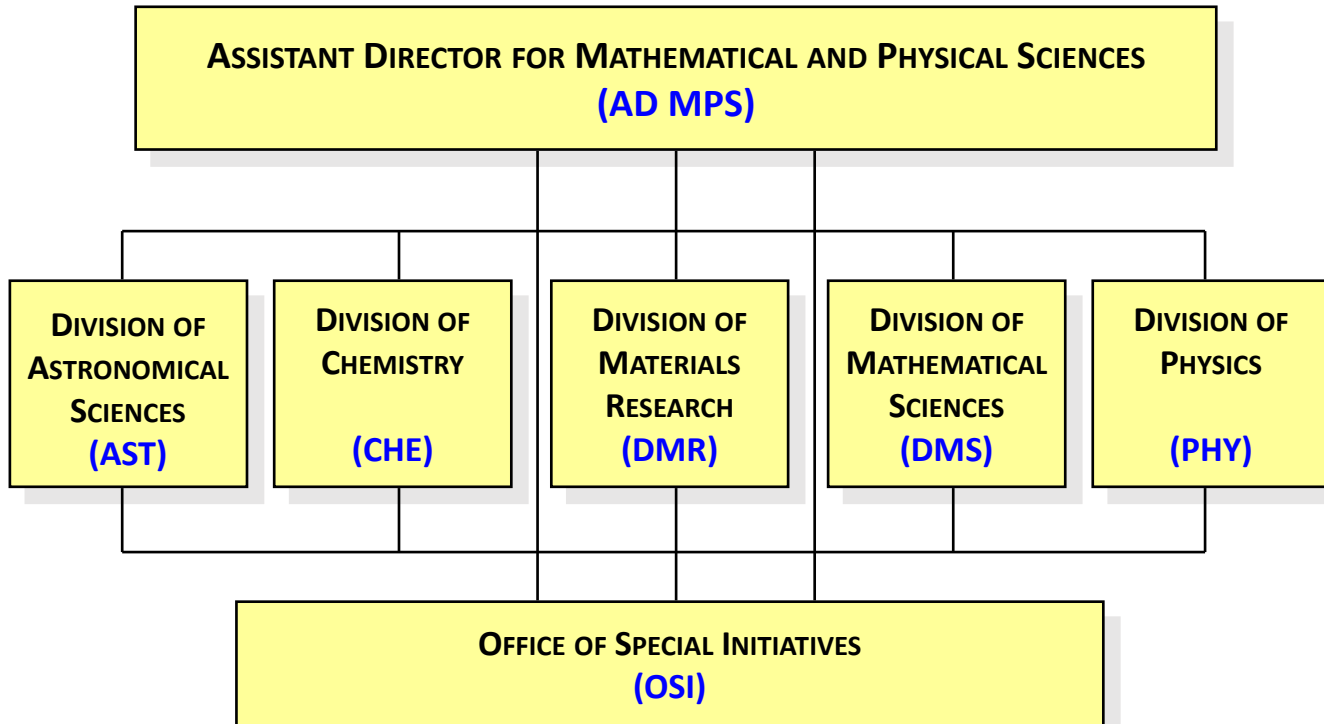
- HELP LAUNCH THE CAREERS OF PRE-TENURE FACULTY IN MATHEMATICAL AND PHYSICAL SCIENCES (MPS) FIELDS.
- BROADEN PARTICIPATION IN RESEARCH SUPPORTED BY THE MPS DIVISIONS TO INCLUDE MEMBERS FROM GROUPS HISTORICALLY EXCLUDED AND CURRENTLY UNDERREPRESENTED IN THE MATHEMATICAL AND PHYSICAL SCIENCES, INCLUDING BLACKS AND AFRICAN AMERICANS, HISPANICS, LATINOS, NATIVE AMERICANS, ALASKA NATIVES, NATIVE HAWAIIANS, AND OTHER NATIVE PACIFIC ISLANDERS.
- PIs AT INSTITUTIONS THAT DO NOT TRADITIONALLY RECEIVE SIGNIFICANT AMOUNTS OF NSF-MPS FUNDING, SUCH AS MINORITY-SERVING INSTITUTIONS (MSIs), PREDOMINANTLY UNDERGRADUATE INSTITUTIONS (PUIs), AND CARNEGIE RESEARCH 2 (R2) UNIVERSITIES ARE ESPECIALLY ENCOURAGED TO APPLY.

INTENT.

TO HELP INITIATE VIABLE INDEPENDENT RESEARCH PROGRAMS SUCH THAT LEAPS-MPS AWARDS ARE FOLLOWED BY COMPETITIVE GRANT SUBMISSIONS THAT BUILD UPON THE RESEARCH FUNDED BY LEAPS AWARDS.



MATHEMATICAL AND PHYSICAL SCIENCES



← WHERE PROPOSALS
ARE SUBMITTED AND
REVIEWED



ELIGIBILITY

- Hold a doctoral degree in a discipline in which a Division of the Directorate for Mathematical and Physical Sciences supports fundamental research.
- The PI must be pre-tenure in a tenure track or equivalent position. See the solicitation for the definition of a “tenure track equivalent” position.
- The PI should not have received an NSF grant, except for a Fellowship, Conference/Workshop, Equipment, Travel, Instrumentation infrastructure, and Research Opportunity Award (ROA) grants.
- Co-Principal Investigators are not permitted.
- Collaborations are permitted. (See more information on Letters of Collaboration on slide 8.)
- PI eligibility is not restricted by US immigration status.



DURATION AND LEVEL OF SUPPORT

DURATION: 24 MONTHS

BUDGET: \$250,000/24 MONTHS; TOTAL COSTS (DIRECT PLUS INDIRECT).



PROJECT DESCRIPTION (NOT MORE THAN 15 PAGES)

Should contain:

- A brief and clear description of the research goals of the project. (The scope of the work should be aligned with the duration of a LEAPS award, which is 24 months.)
- A detailed description of the research plan and proposed activities, including preliminary data (if available) and a description of the anticipated results.
- A description of the relationship between the research project and the PI's longer term research goals.
- A discussion of how the proposed activities will facilitate the development of a subsequent research proposal.
- A specific plan that shows how proposed activities will increase:
 - ✓ the participation of scientists from underrepresented groups in Mathematical and Physical Sciences research supported by MPS, and
 - ✓ the numbers of such individuals that serve as role models for the scientific workforce of the future.
- A section on Results from Prior NSF support, if applicable (~ 2 pages). Present the goals and outcomes of the intellectual merit and broader impacts of **one** prior award that has a significant research component.
- A brief description of the goals and the PI's role for any other awards listed in the Current and Pending support. Clarify if these awards are to support primarily research, instrumentation, educational efforts, etc.



SUPPLEMENTAL DOCUMENTS: LEAPS-MPS IMPACT STATEMENT (2-3 PAGES)

Provide information that will help a reviewer assess:

- i) the potential impact of the proposed project on the institutional research environment, especially in terms of enhancing research capabilities,
- ii) the potential impact on the career of the faculty participant,
- iii) the potential impact on the ability of the involved department to better prepare students for entry into advanced-degree programs and/or careers in science and engineering, including any provisions that will increase the participation of groups underrepresented in science and Engineering (see solicitation).



Supplemental Documents: Letters

Institution Letter

A letter from the department chair or dean pledging their support for the proposed activities and confirming the eligibility status of the PI.

If the PI is not in a tenure-track appointment, the institution must state in the letter its contractual agreement with the PI if the appointment period and requested grant award dates are not congruent.

Collaboration letters, if needed.

Use the format recommended in Chapter II.2.C.j of the PAPPG.



Additional Solicitation-Specific Criteria

Reviewers must evaluate:

1) The extent to which the proposed activities will increase:

- (a) the participation of scientists from underrepresented groups in the areas of the mathematical and physical sciences supported by MPS (including Blacks and African Americans, Hispanics, Latinos, Native Americans, Alaska Natives),
- (b) the numbers of such individuals that serve as role models for the scientific workforce.

2) The potential of the research initiation activities to position the PI for a competitive CAREER or individual-investigator research proposal.

3) The LEAPS-MPS Impact Statement, specifically:

- (a) the likely impact of the proposed project on the institutional research environment, especially in terms of enhancing research capabilities,
- (b) the impact on the career of the faculty participant, and
- (c) impact on the ability of the involved department to better prepare students for entry into advanced-degree programs and/or careers in science and engineering, including any provisions that will increase the participation of groups historically excluded and currently underrepresented in science and engineering, defined for the purposes of this solicitation as Blacks and African Americans, Hispanics, Latinos, Native Americans, Alaska Natives, Native Hawaiians, and other Native Pacific Islanders.



THANKS!

PROGRAM CONTACTS:

CATALINA ACHIM

JAQUELINE KEANE

ANNE MARIE SCHMOLTNER

SOULEYMANE DIALLO

TOMEK BARTOSZYNSKI

KATHY MCCLOUD

OFFICE OF STRATEGIC INITIATIVES

ASTRONOMY

CHEMISTRY

MATERIALS RESEARCH

MATHEMATICAL SCIENCES

PHYSICS

CACHIM@NSF.GOV

JKEANE@NSF.GOV

ASCHMOLT@NSF.GOV

SOMARDIA@NSF.GOV

TBARTOSZ@NSF.GOV

KMCCLOUD@NSF.GOV

Questions?



Tenure-track Equivalent Position

For a position to be considered a tenure-track-equivalent position, it must meet all of the following requirements:

- (1) the employee has a continuing appointment that is expected to last the duration of a LEAPS-MPS grant;
- (2) the appointment has substantial research *and* educational responsibilities; and
- (3) the proposed project relates to the employee's career goals and job responsibilities as well as to the mission of the department or organization.